






Conergy PowerPlus 245P – 265P




Illustration only


 **Module type**
framed


 **Nominal output**
245 W – 265 W

 **No. of cells**
60

 **Cell type**
polycrystalline

 **Module weight**
18.2 kg

 **Max. permissible load ¹**
6,000 Pa

 **Product warranty ²**
12 years

Conergy PowerPlus solar modules offer premium quality that pays for itself. They guarantee high system yields and reliable operation over the entire term, and under the most demanding environmental and weather conditions. They are manufactured to the highest quality standards and are characterised by many well thought through details and characteristics that set standards in this combination.

Benefits:

- | Premium quality for long service life
- | Up to 3 % more module output through positive performance tolerance
- | High yield security thanks to linear performance guarantee for 25 years
- | Potential Induced Degradation (PID) resistant



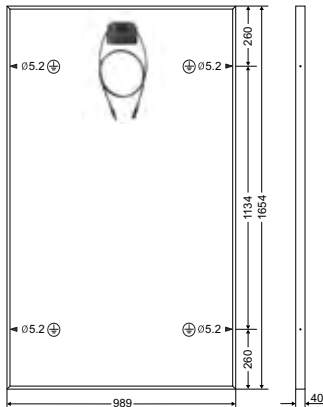
¹ In accordance with IEC 61215 Ed.2

² According to the current warranty conditions of Conergy Deutschland GmbH

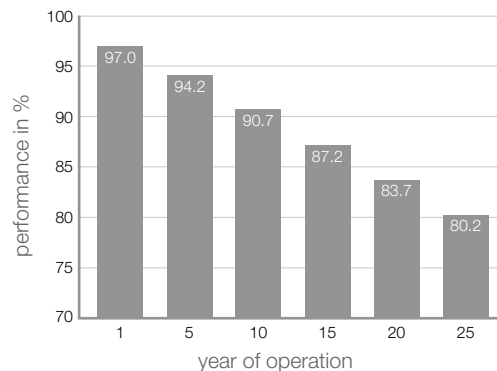
Conergy PowerPlus 245P – 265P

Mechanical specifications and additional data

Module dimensions (L x W x H) ³	1.654 x 989 x 40 mm
Cell dimensions	156 x 156 mm
Number of cells	60
Cell type	Polycrystalline cell, 3-busbar technology
NOCT ⁴	46° C ± 2° C
Max. permissible load ⁵	6,000 Pa
Front cover type	Micro-structured solar glass, 3.2 mm thick
Junction box	ZJRH Renhesolar GF 20 (IP 67), 90 x 77 x 16 mm
Bypass-diode	3 pieces, type PST4020
Cable	2 x 1.000 mm length, 4 mm ² cross-section
Plug type	ZJRH Renhesolar 05-6 (MC4 combinable)
Frame material	Anodised aluminium
Module weight	18.2 kg
Certification	IEC/EN 61215 Ed. 2, IEC/EN 61730, ISO 9001:2008, ISO14001:2004, OHSAS 18001
Product warranty ⁶	12 years
Performance warranty ⁶	Linear performance warranty year 10: >90.7 % of nominal power year 25: >80.2 % of nominal power
Max. permissible system voltage	1,000 V
Reverse current loadability (IR)	20 A



Linear performance warranty for solar modules of the PowerPlus series (-0,7%/year)



³ Dimensional tolerance: +/-1 mm

⁴ Nominal operating temperature of the cell at 800 W/m² irradiation, 20°C ambient temperature, wind speed of 1 m/s

⁵ In accordance with IEC 61215 Ed. 2

⁶ According to the current warranty conditions of Conergy Deutschland GmbH



CONERGY

Electrical ratings under standard test conditions ^{7, 8}					
Conergy PowerPlus	245P	250P	255P	260P	265P
Maximum power (P_{MPP})	≥245Wp	≥250Wp	≥255Wp	≥260Wp	≥265Wp
Power sorting	-0%/+3%	-0%/+3%	-0%/+3%	-0%/+3%	-0%/+3%
Module efficiency	14.98%	15.28%	15.59%	15.98%	16.20%
Maximum power voltage (V_{MPP})	30.12V	30.38V	30.64V	30.90V	31.16V
Maximum power current (I_{MPP})	8.20A	8.29A	8.39A	8.48A	8.57A
Open circuit voltage (V_{OC})	36.78V	37.12V	37.45V	37.78V	38.12V
Short circuit current (I_{SC})	8.68A	8.76A	8.85A	8.93A	9.01A
Temperature coefficient of (P_{MPP}), in percent	-0.42%/°C	-0.42%/°C	-0.42%/°C	-0.42%/°C	-0.42%/°C
Temperature coefficient of (V_{OC}), absolute	-0.118V/°C	-0.119V/°C	-0.120V/°C	-0.121V/°C	-0.122V/°C
Temperature coefficient of (V_{OC}), in percent	-0.32%/°C	-0.32%/°C	-0.32%/°C	-0.32%/°C	-0.32%/°C
Temperature coefficient of (I_{SC}), absolute	5.12mA/°C	5.17mA/°C	5.22mA/°C	5.27mA/°C	5.31mA/°C
Temperature coefficient of (I_{SC}), in percent	0.059%/°C	0.059%/°C	0.059%/°C	0.059%/°C	0.05%/°C

Electrical ratings at 800 W/m ² , NOCT und AM 1,5 ⁸					
Conergy PowerPlus	245P	250P	255P	260P	265P
Maximum power (P_{MPP})	182.30W	186.00W	189.60W	193.40W	197.3W
Open circuit voltage (V_{OC})	34.94V	35.26V	35.58V	35.89V	36.20V
Short circuit current (I_{SC})	6.94A	7.01A	7.08A	7.14A	7.21A
Maximum power voltage (V_{MPP})	28.07V	28.31V	28.56V	28.80V	28.90V
Maximum power current (I_{MPP})	6.49A	6.57A	6.64A	6.72A	6.89A

⁷ Standard test conditions that are defined as follows: 1.000 W/m² irradiation at a spectral density of AM 1.5 and a cell temperature of 25° C

⁸ Measuring uncertainty (P_{MPP}): +/-3 %, Tolerance for V_{OC} , I_{SC} , V_{MPP} and I_{MPP} : +/-10 %



CONERGY
Our world is full of energy

Conergy Deutschland GmbH
Kaufmannshaus
Bleichenbrücke 10
20354 Hamburg
Germany

Telefon +49 (0)40 236 20 80
E-Mail info@conergy.de

Available at:

